

BPC West Sewershed Small Diameter Package 6A Project

Alla Korostyshevsky, P.E., PMP

Project Engineer, Pipelines & SSO Reduction

Roxanne Lockhart

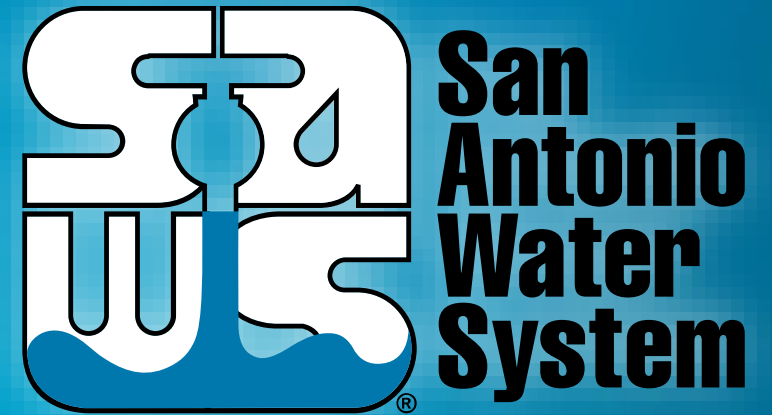
Contract Administrator – Contract Administration

Diana Woltersdorf

Manager – Contract Administration

Marisol V. Robles

SMWVB Program Manager



Non-Mandatory WebEx Pre-Bid Meeting

April 15, 2021

MAKING SAN ANTONIO
WATERFUL



Oral Statements

Oral statements or discussion during the pre-bid meeting today will not be binding, nor will it change or affect the terms or conditions within the Plans and Specifications of this Project. Changes, if any, will be addressed in writing only via an Addendum.

Agenda

- General Information
- Small, Minority, and Woman-Owned Business (SMWB Requirements)
- Contract Solicitation Website
- Vendor Registration & Notification (VRN)
- IFB Schedule
- Bid Packet Preparation
- Contract Requirements
- Key Reminders
- Temporary Bid Opening Instructions
- Contact Information
- Technical Information

General Information

- Non-mandatory pre-bid meeting
- Attendees should sign-in via chat on WebEx
- Presentation has been posted on SAWS website along with the sign in sheet.
- CCTV video clips Disclaimer Form and Environmental Technical Memorandums have been posted on SAWS website.
- Construction services being procured through low bid
- **Construction Estimate: \$3,350,581.00**
- **Calendar Days: 465 days**

Aspirational SMWB Goal

| Industry | Aspirational SMWB Goal |
|--------------|------------------------|
| Construction | 20% |

The aspirational SMWB goal is 20% of your total bid price.

Accepted SMWVB Certification Agency

- **South Central Texas Regional Certification Agency**
 - MBE, WBE, SBE (Includes “HUB” Program)

Minimum Qualifications for SMWVB recognition:

- **SBE-Certified** (even MBEs and WBEs)
- **Local office or local equipment yard**

Good Faith Effort Plan (GFEP) FAQs

- **Q: Is the 20% SMWB goal mandatory?**
A: No, but we ask prime contractors to do their best with good faith outreach efforts. If the goal is not met, proof of outreach efforts is required with the submittal.
- **Q: What if I am having trouble finding SMWB subcontractors?**
A: Please email the SMWVB Program Manager with the scopes of work you are seeking. You will receive lists of local SMWVB-certified firms to contact.
- **Q: What if my business is SMWB-certified? Do I need to find SMWB subs?**
A: If your firm is SMWVB-certified, you will most likely meet the goal. However, the GFEP is a required document, and a good faith outreach effort is still necessary.
- **Q: Do I need to include all my subcontractors in the GFEP or just those that qualify towards the SMWB goal?**
A: All subcontractors need to be included in the GFEP, even those that may not count towards the SMWB goal.
- **Q: What if I have questions about the GFEP?**
A: Please contact the SMWVB Program Manager at 210-233-3420, or at Marisol.Robles@saws.org. GFEP questions can be asked at any time before the submittal is due.

Post Award: Subcontractor Payment & Utilization Reporting (S.P.U.R.) System

1. Subcontractor & Supplier Payment Tracking
2. Subcontractor and Supplier Additions or Substitutions
3. LCP Tracker
4. Must be Current and Accurate before Retainage is released

<https://saws.smwbe.com>



San Antonio Water System

OUR MAIN SITE CONTACT SUPPORT

Subcontractor Payment & Utilization Reporting System

Log In

System Training
Learn how to fully utilize our system with a live trainer
Training

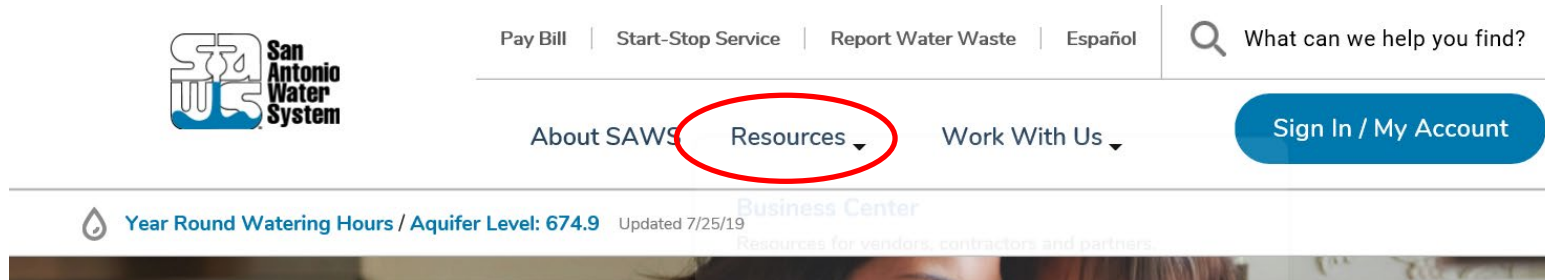
About the System
Learn more about this system and how it works today
Information for Vendors

Account Access
Lookup Vendor accounts or reset user passwords
Account Lookup
Forgot Password

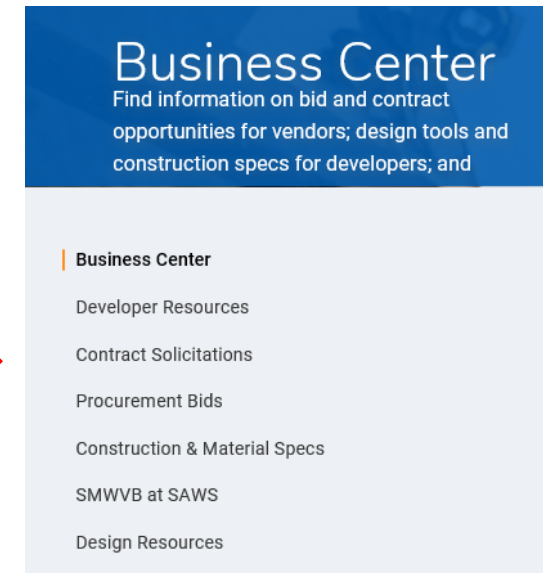
The Subcontractor Payment & Utilization Reporting System is powered by B2Gnow Software © Copyright 2018.

Contract Solicitations Website

- To locate the Contract Solicitations website choose Resources



- At the drop down menu choose Contract Solicitations.



Vendor Registration & Notification (VRN)

Reasons to Register in the VRN

- Receive bid notices directly in your email “Inbox”.
- Download bid documents.
- Subscribe to specific bids.
- Receive addendum notifications.



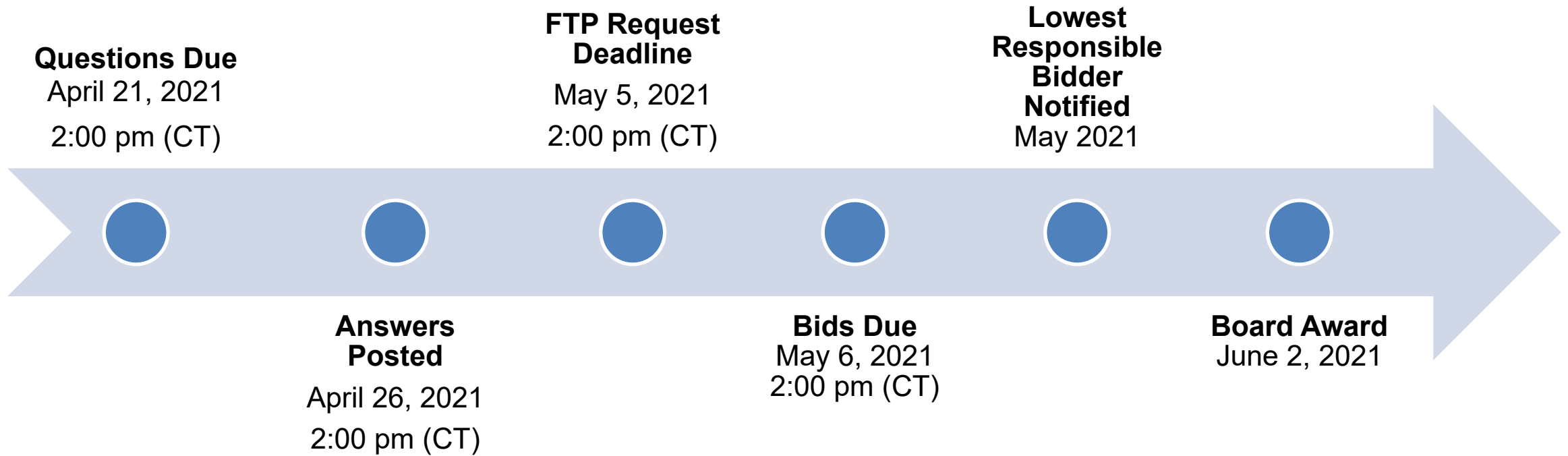
Notify Me

Receive updates sent straight to your inbox.

Subscribe

https://apps.saws.org/Business_Center/Contractsol/

IFB Schedule



Bid Packet Preparation

- Electronic or Physical bid permitted. If electronic see Electronic Bid Opening Instructions for last day to request FTP site access.
- Utilize the Bid Packet Checklist within the specifications
 - Only limited items are required with the initial bid packet
- **Double check all** mathematical calculations and verify all extensions
- Addendums are acknowledged on the Bid Proposal
- Ensure Mobilization & Prep ROW Line Item does not exceed the percentage allowed
- Apparent low bidder must submit additional information within 24 hours of the bid opening to include:
 - Conflict of Interest Questionnaire, Proof of Insurability (Letter from Insurer or Sample Certificate of Insurance), Company Information Packet, Statement Regarding Ability to Complete the Project, W-9, Statement of Bidder's Experience, Detailed Baseline Schedule with NTP of May 11, 2021

Bid Packet Preparation (*cont.*)

- Bidder shall ensure that the 3 projects submitted on the Statement of Bidder's Experience form are:
 - Of similar size and scope as indicated on the check boxes
 - Completed by the bidder (submitting contractor)
 - Performed between 2015-2021
 - Owner references (entity bidder contracted with)
 - Verifiable with up-to-date contact information for the Owner
- Failure to complete the form properly may result in the bid being found non-responsive

Contract Requirements

Prevailing Wage Rate and Labor Standards – Section 2.10 of the General Conditions

- Payroll records are subject to review
- Contractors to utilize LCP Tracker
- Certified payroll to be submitted on weekly basis
- Contractors are responsible for sub-contractor payroll
- Late payrolls delay contractor payments from SAWS
- Wage decisions are included within the specifications
- Site visits are random and unannounced
- Interviews will be conducted and will be private & confidential
- All apprenticeship programs will need to be approved by Department of Labor prior to starting

Contract Requirements

- Insurance requirements are found in Section 5.7 of the GCs
 - Installation Floater coverage is required in lieu of Builder's Risk insurance
- Insurance must be compliant prior to executing the contract
- SAWWS will ask for insurance prior to Board award to expedite execution of the contract
 - Any deficiencies must be corrected prior to Board award
- Contractor must maintain insurance coverage during the construction of this Project

Key Reminders

- All questions should be sent in writing to Roxanne Lockhart, Contract Administrator by email roxanne.lockhart@saws.org or fax (210) 233-4438.
- Please identify the project by its associated solicitation number and project name (**CO-00367**, BPC West Sewershed Small Diameter Package 6A).
- Contractors should not contact the SAWS project engineer, the consultant for this project, or any other SAWS staff up until Board award.

Temporary Bid Opening Procedures

- Late bids will not be accepted, and will be returned unopened.
- Due to the COVID-19 emergency and to protect the health of the public, SAWS is implementing new procedures for the submission of bids.
 - Bids will be received either Electronically or through Sealed bids.
 - Electronic bids will be received via the secure SAWS FTP site.
- Sealed bids will be received by Contract Administration, 2800 U.S. Hwy 281 North, Tower II, Customer Center Building, via a drop box located on the left wall when walking through the first set of double glass doors of the main Tower II entry on the north side of the building.
- If bids will be delivered in person to SAWS, Bidders should allow sufficient travel time

Contact Information

| <u>Contact Name</u> | <u>Title</u> | <u>Telephone Number</u> | <u>Email address</u> |
|---------------------|------------------------|-------------------------|--|
| Roxanne Lockhart | Contract Administrator | 210-233-3095 | Roxanne.Lockhart@saws.org |
| Marisol V. Robles | SMWVB Program Manager | 210-233-3420 | Marisol.Robles@saws.org |

REMINDER

Please be advised that Bidders are prohibited from communicating with any other SAWS staff, the Consultant, the Developer, or City of San Antonio officials regarding this IFB up until the contract is awarded as outlined in the Instructions to Bidders

Project Background

- Sealed Bids are requested by the San Antonio Water System for construction of approximately 15,217 linear feet of 6” to 18” diameter sanitary sewer main to be rehabilitated via Cured-In-Place-Pipe (CIPP) and Point Repairs and associated manhole improvements.
- Project is part of the Consent Decree. See Special Conditions for additional information on these requirements.
- Contractor is to become familiar with the plans, locations, and specifications.

Supplemental Conditions

- Contractor shall perform the work with its own organization on at least 40% of the total original contract price which should be indicated on the Good Faith Effort Plan.
- Liquidated damages for the purpose of this contract, will be assessed at \$1,185 per day.

Project Overview

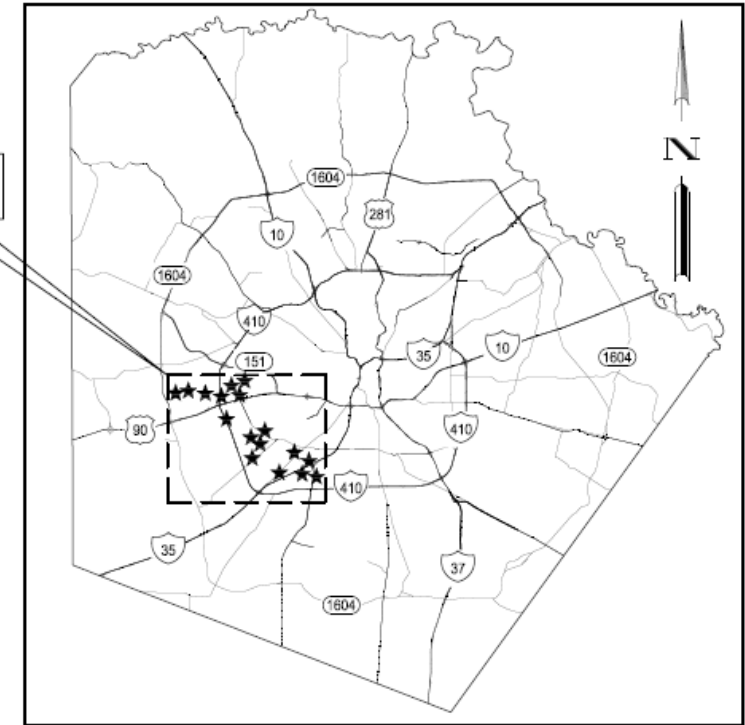
28 Project Locations (West & S. West of San Antonio)

- Residential Areas
- Easements
- COSA ROW
- JBSA Lackland AFB

Sewer Main Rehab by CIPP

- 6" (220 LF); 8" (11,808 LF); 10" (337 LF);
12" (1,122 LF); 15" (1,033 LF); 18" (499 LF)
- Point repairs, Obstruction Removals, Services
- New Manholes, Manhole rehabilitation, Manhole reconstruction
- Approx. Depth range: 4 VF – 25 VF

PROJECT LOCATIONS

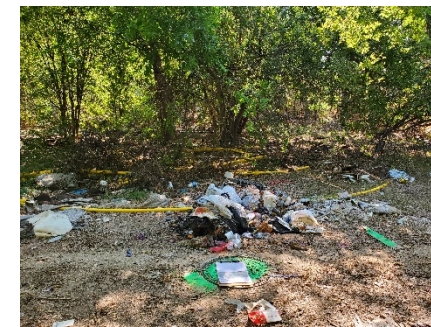
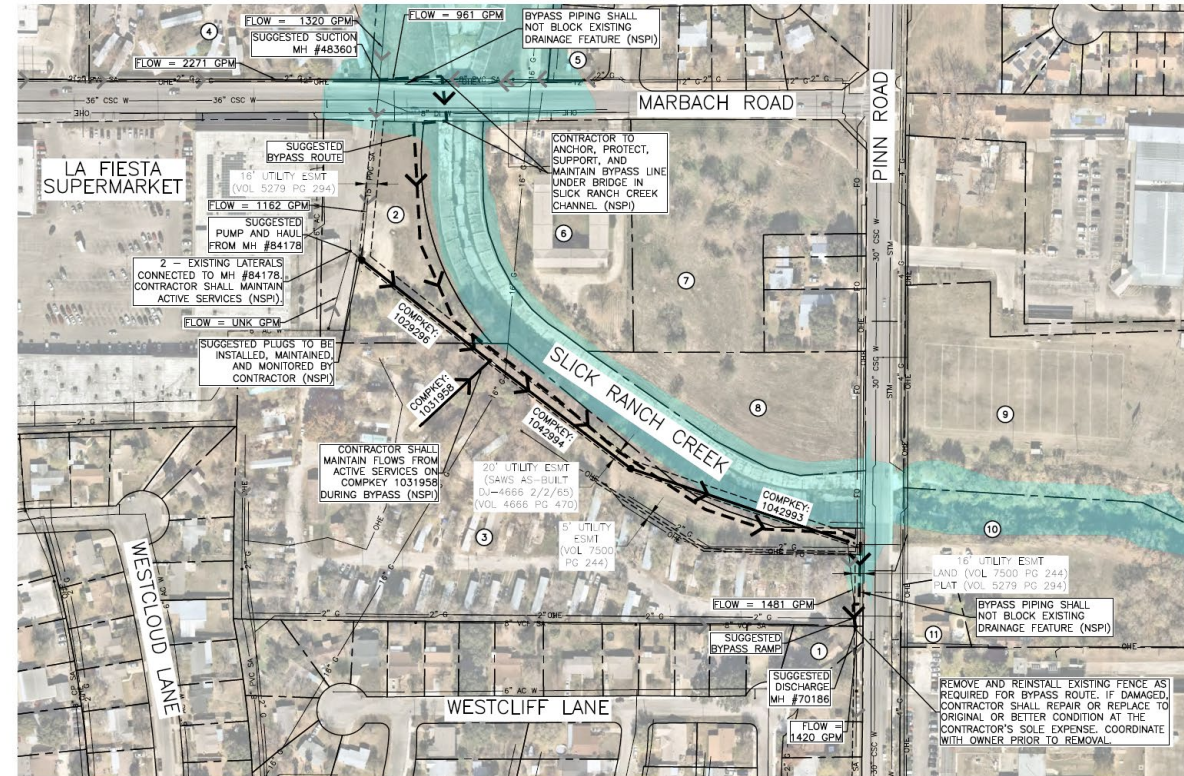


CITY LOCATION MAP
N.T.S.

Project Overview

Project Location 6

- 4 segments
- Westhill Mobile Home Park
- 15" CIPP (1,033 LF); 8" CIPP (168 LF)
- Suggested bypass under Marbach Rd.
- 10 Point Repairs
- Remove & replace 1 Cleanout
- Adjust 1 manhole; Adjust & Rehabilitate 2 manholes
- Reconstruct 1 manhole
- Debris in easement



Project Overview

Project Location 7

- 2 segments
- Easement between residences
- 8" CIPP (404 LF)
- Compkey 1029252 (point repair manhole to manhole)
- Compkey 1031989 (curved)
- II Services
- Adjust & Rehabilitate I manhole
- Remove existing and install I new manhole
- Sheds and homeowner property in easement
- Pending property sale 1902 Canteen

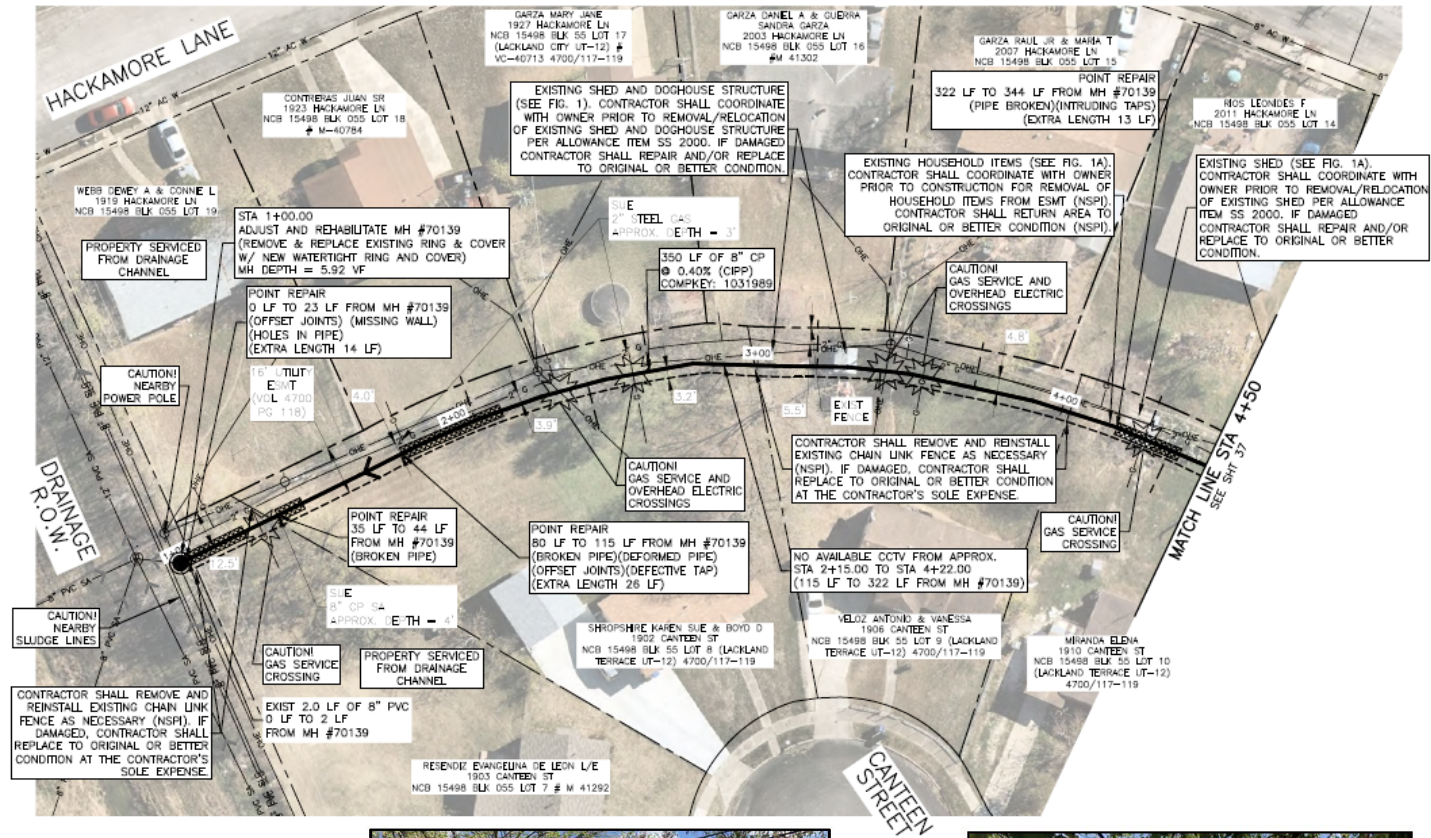


FIGURE 1. EXISTING SHED AND DOGHOUSE STRUCTURE AT 1902 CANTEEN.

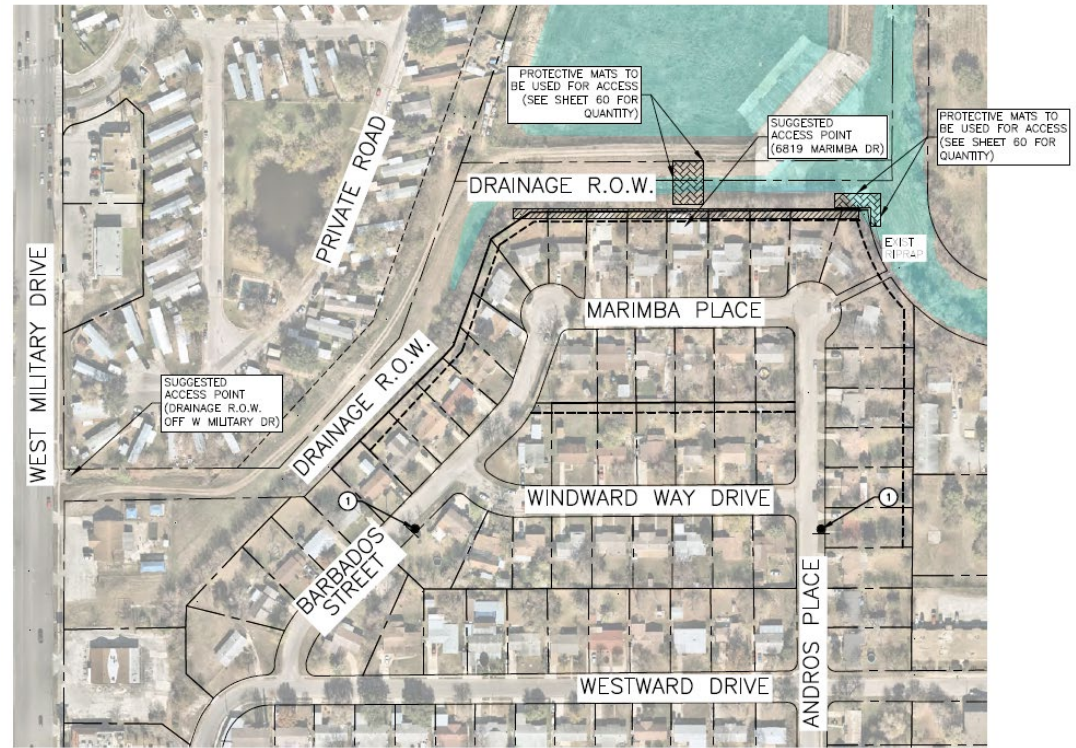


FIGURE 1A. EXISTING SHED AND HOUSEHOLD ITEMS IN EASEMENT AT 1910 CANTEEN.

Project Overview

Project Location 13

- 2 segments
- Drainage ROW off W. Military Dr.
- Existing riprap nearby (downstream area)
- 8" CIPP (546 LF)
- 5 Point Repairs
- 7 Services
- Adjust & Rehabilitate 2 manholes
- Reconstruct 1 manhole
- Existing structures encroach easement
- Existing landscaping

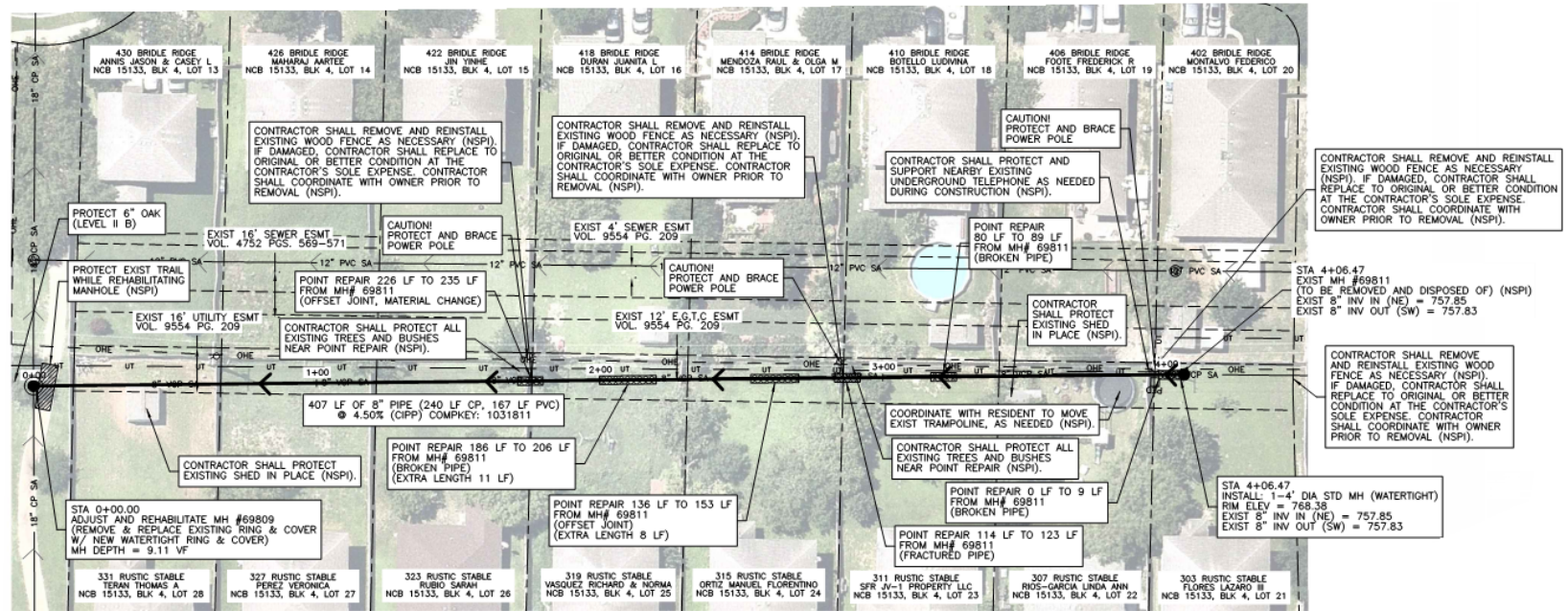


SIMILAR TO:
Project Location 16

Project Overview

Project Location 18

- 16' Utility Easement along back of properties
- 8" CIPP (407 LF)
- 6 Point Repairs
- Adjust & Rehabilitate downstream manhole
- Remove & Replace upstream manhole



Project Overview

Project Location 19

- Easement between residences
- 8" CIPP (100 LF)
- 1 Point Repair
- Adjust & Rehabilitate 2 manholes (nearby power pole)
- Nearby retaining wall

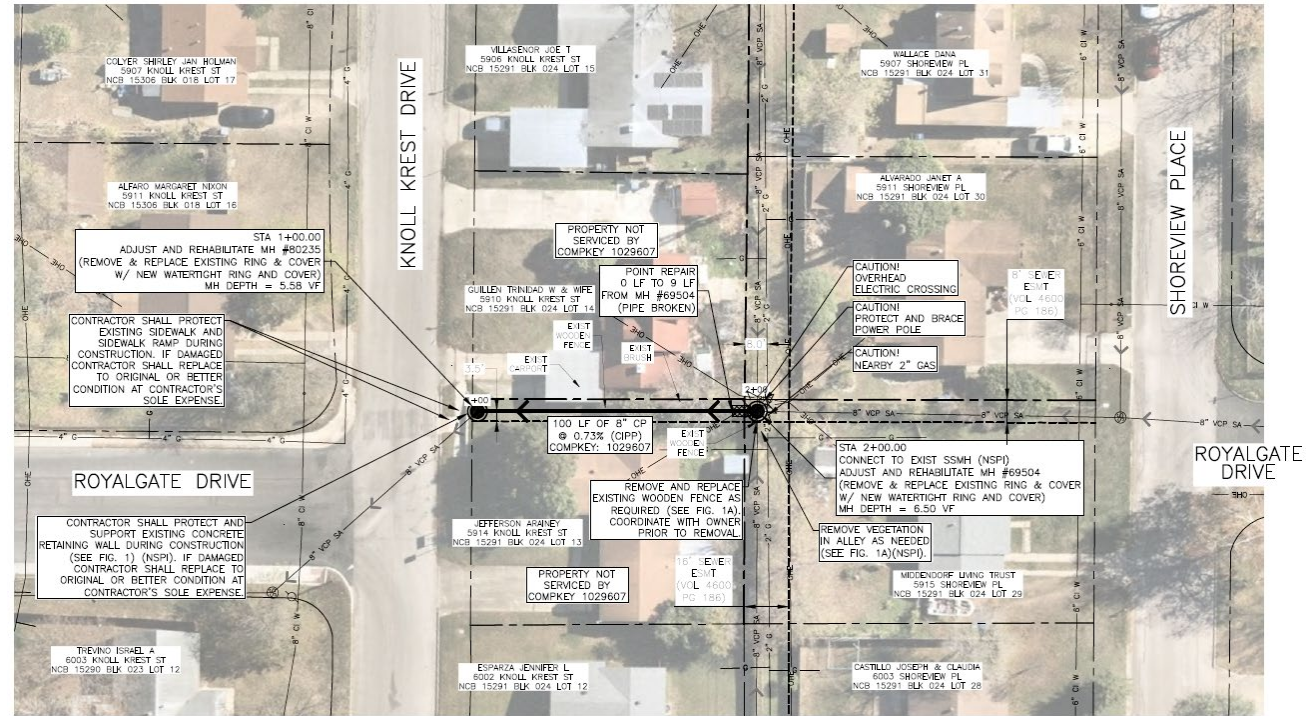


FIGURE 1: EXIST RETAINING WALL TO BE PROTECTED NEAR MH #80235 (NSPI).

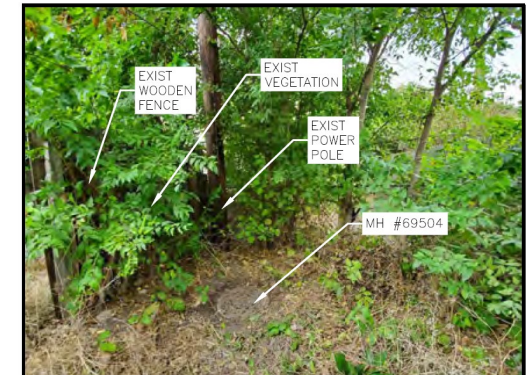
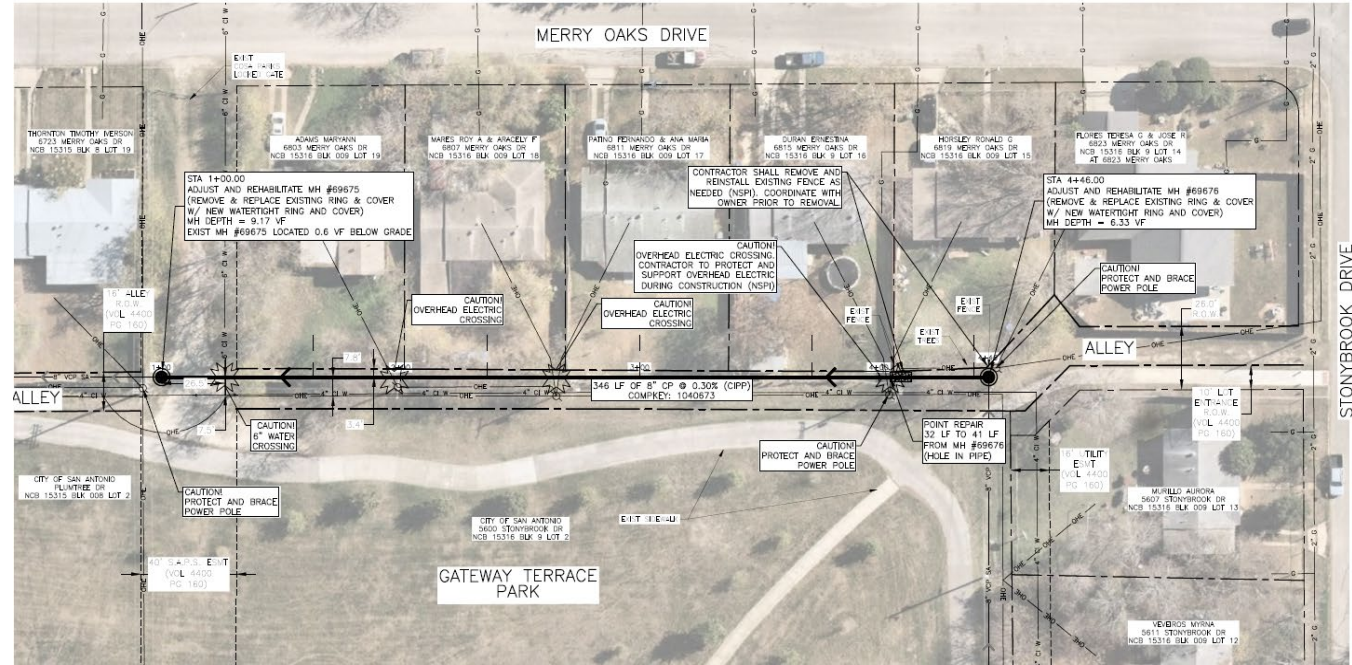


FIGURE 1A: EXIST POWER POLE, VEGETATION, AND WOODEN FENCE NEAR MH #69504 (FACING NORTHEAST).

Project Overview

Project Location 20

- Gateway Terrace Park
- 8" CIPP (346 LF)
- 1 Point Repair
- 5 Services
- Adjust & Rehabilitate 2 manholes
- Coordination for access with CPS Energy and COSA Parks



Project Overview

Project Location 22

- Homestead Apartments; COSA ROW
- Wooded area/vegetation
- Debris in easement
- Nearby abandoned 16" gas line
- 8" CIPP (405 LF)
- 3 Point Repairs
- 2 Services
- Adjust & Rehabilitate 1 manhole
- Reconstruct 1 manhole

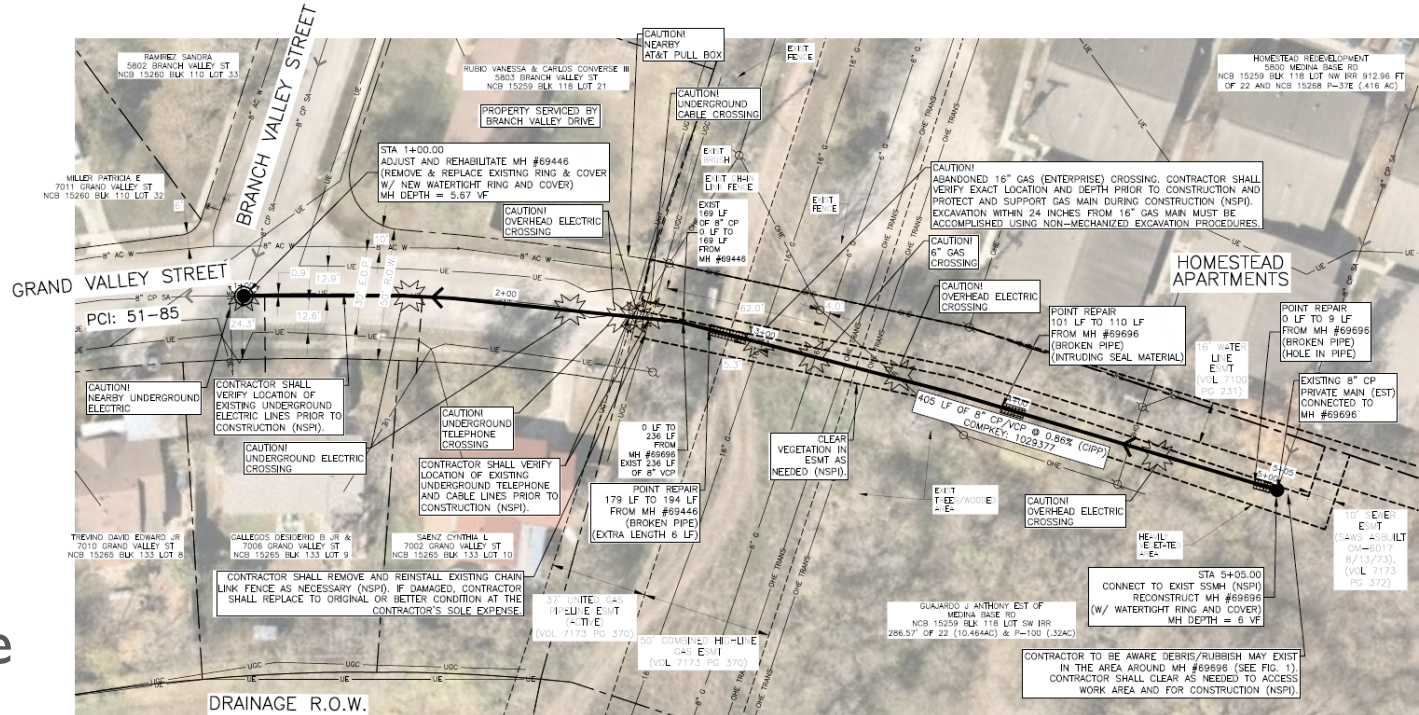
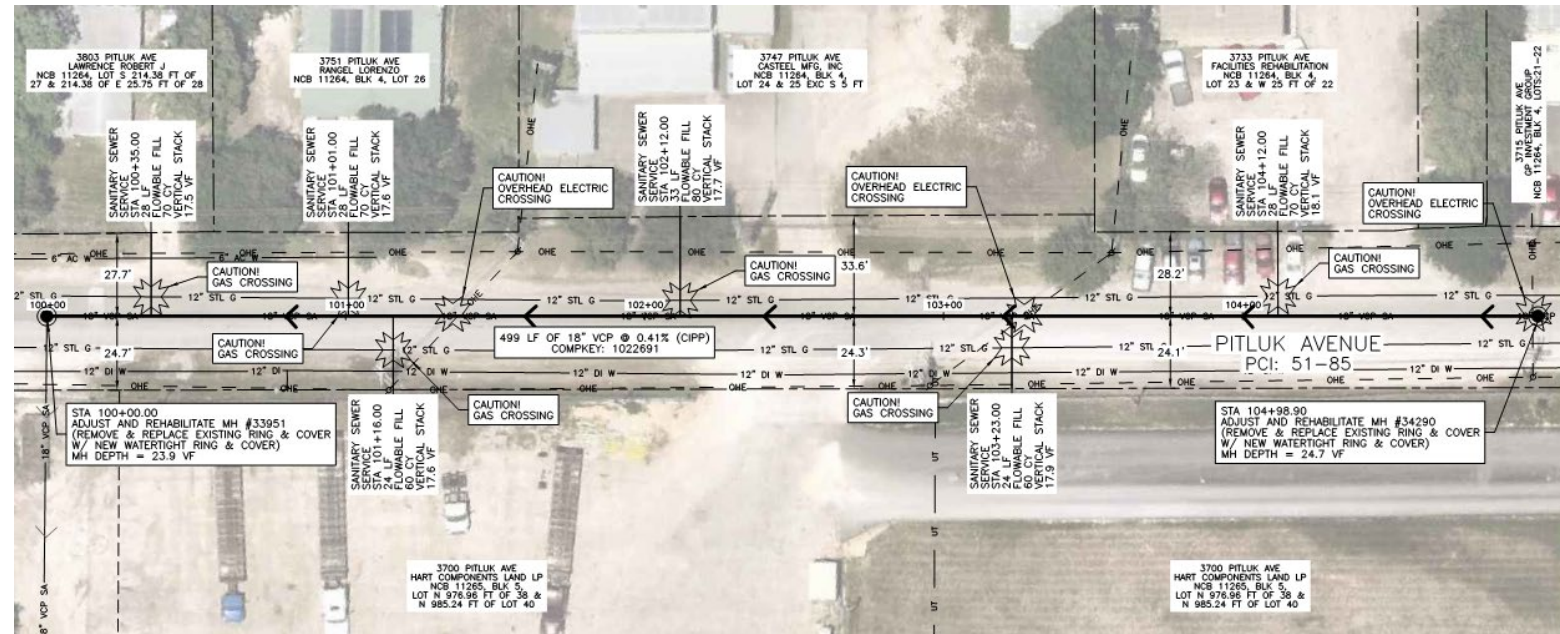


FIGURE 1: DEBRIS NEAR MH #69696 (FACING NORTHWEST).

Project Overview

Project Location 24

- COSA ROW
- 18" CIPP (499 LF)
- 0 Point Repairs
- Sewer main is over 20' deep
- 6 Services to be re-laid with new vertical stacks
- Adjust & Rehabilitate 2 manholes



Project Overview

Project Location 25

- COSA ROW
- Concrete riprap and drainage features nearby
- 8" CIPP (391 LF)
- 2 Point Repairs
- 22 Services
- Adjust & Rehabilitate 1 manhole
- Reconstruct 1 manhole

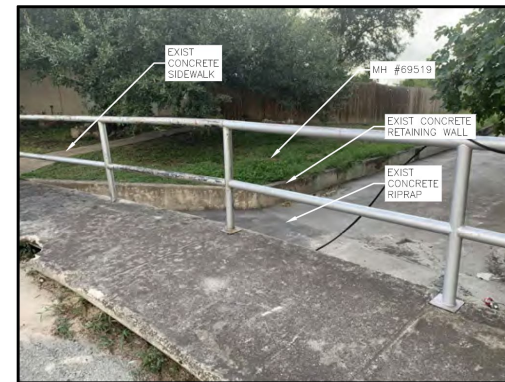
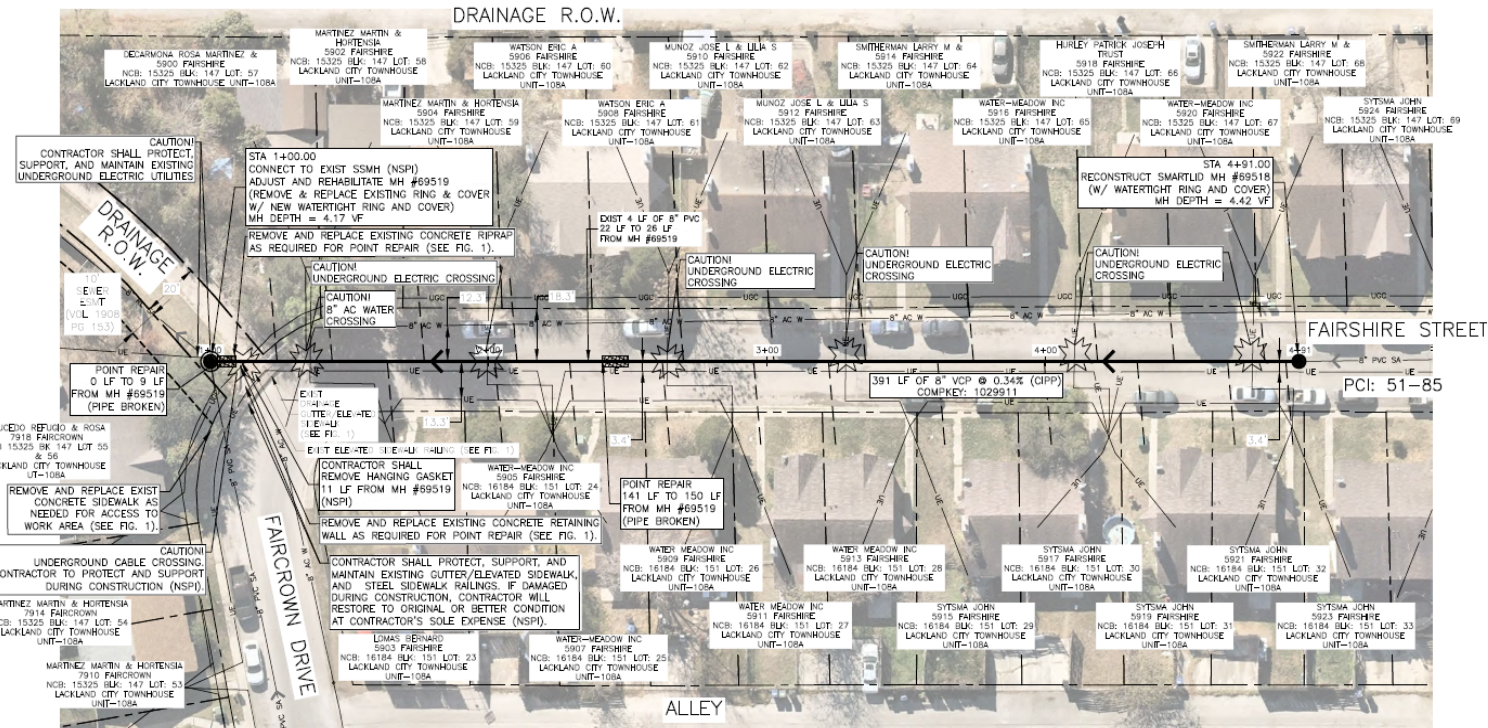


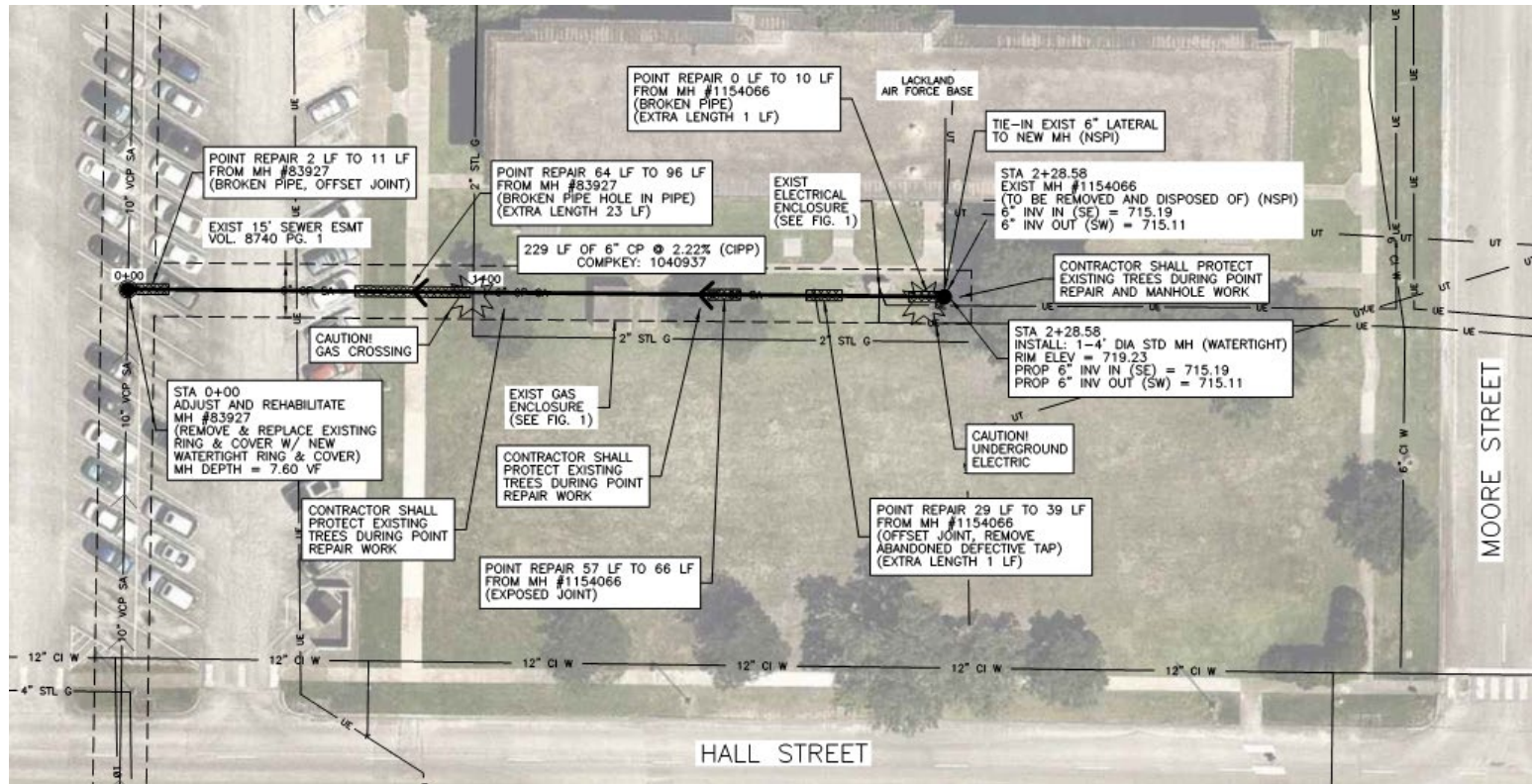
FIGURE 1: EXIST GUTTER/ELEVATED SIDEWALK, SIDEWALK RAILING, AND ADJACENT RETAINING WALL (FACING EAST).

SIMILAR TO:
Project Location 26

Project Overview

Project Location 28

- 15' Sewer Easement on JBSA-Lackland
- 6" CIPP (229 LF)
- 5 Point Repairs
- 1 Services (at manhole)
- Adjust & Rehabilitate downstream manhole
- Remove & Replace upstream manhole



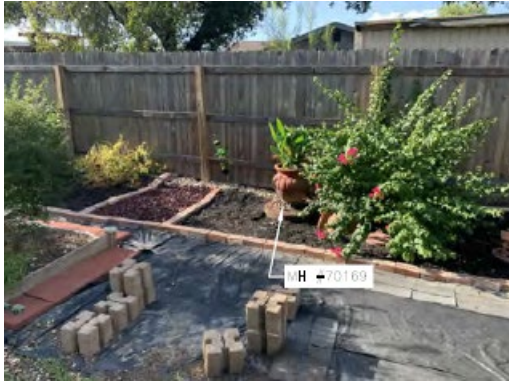
Special Conditions

Notable Project Locations

- Project Location 7
 - Contractor shall begin work on Project Location 7 second to last.
 - 1902 Canteen under sale, SAWS to send Health and Safety Letter to new owner.
- Project Location 20
 - Contractor shall contact COSA Parks and Recreation and CPS Energy at least 1 week prior to Mobilization and start construction for access to Gateway Terrace Park.
- Project Location 28
 - Contractor shall begin work on Project Location 28 last.
 - Contractor responsible for obtaining access to JBSA-Lackland AFB.
 - All excavated soil within JBSA-Lackland AFB shall be treated as potentially contaminated (Special Specification 5000).

Special Conditions

Design Considerations



Landscaping/garden features



Homeowner property items



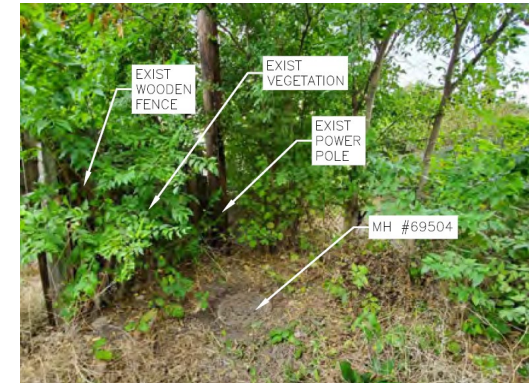
Homeowner structure/items



Structure (Shed) relocation



VIA Bus Stops



CPS Power Pole Bracing

Special Conditions

Permits:

- Floodplain Development Permit obtained by SAWS.
- Tree Coordination Memorandum obtained by SAWS.
- Contractor responsible for obtaining all other permits.

Access to SAWS Easements:

- Contract documents include Right of Entry documents obtained by SAWS.
- Contractor shall coordinate with landowners and tenants.
- Contractor shall provide Uniformed Officer (Item 530) as required by SAWS Inspector and SAWS Security.

Special Provisions to Technical Specifications

Item 507 Chain Link Wire Fence

- This item shall also govern for the removal and replacement (new installation) of wood privacy fence

Item 804 New Tree & Shrub Planting and Maintenance (COSA Spec)

- This item will be measured by the unit of lump sum for the pruning, protection, and/or installation of all trees, plants, landscaping, planters, garden features, shrubs (cost should include materials, labor, supplies, equipment, incidentals, installation, warranty, mulch, irrigation/gatorbags, monitoring/ treatments as needed, staking, etc.) Payment shall be as one (1) lump sum (Item 804 – COSA Tree Protection)

Item 866 Sewer Main Television Inspection

- Removal of hanging gaskets shall not be measured separately for payment
- Cleaning includes the removal of all debris/solids, sand, grease, grit, rock, etc. from the sewer mains

Special Provisions to Technical Specifications

Item 901 Rehabilitation of Sanitary Sewer by Cured-in-place pipe (Hot water or steam cured)

- Where the lining is inverted under the pressure of water and cured by circulating hot water
- Hydrophilic End Seal Sleeves are required at each end of the pipe segment to be rehabilitated
- Soil Modulus: 500 psi. Contractor may submit calculations signed and sealed by a Texas Professional Engineer utilizing other values for soil modulus so long as those values are part of the sealed calculations, and the calculation method complies with ASTM F1216.

Item 3000 Handling Asbestos Cement Pipe

- Shall be paid for at the contract unit price bid per linear foot of AC water main uncovered during construction

Special Specifications

Item SS 1020 CPS Energy Power Pole Bracing and Gas Line Adjustment Allowance

- Allowance for labor, supervision, tools, equipment, materials to Brace power poles, guy wires and gas lines; Adjust gas main and/or gas service
- Power pole bracing locations to be scheduled towards the end to ensure adequate time to coordinate with CPS Energy

Item SS 2000 Structure (Shed) Coordination, Protection, Relocation

- Allowance to temporarily relocate structures, return structures to original condition, and restore work area to original and/or better condition and protect persons and property

Special Specification 5000 Excavation, Removal, and Disposal of Hazardous Materials

- Governs excavation, hauling, stockpiling, testing and disposal of contaminated soils classified as Class 1 hazardous and/or Class 2 non-hazardous waste within Lackland Air Force Base

Item SS 9999 Protective Mats

- Governs protective mats for access in Project Location 13 drainage right-of-way

QUESTIONS



Reminder: Oral statements or discussion during the pre-bid meeting today will not be binding, nor will it change or affect the terms or conditions within the Plans and Specifications of this Project. Changes, if any, will be addressed in writing only via an Addendum.

BPC West Sewershed Small Diameter Package 6A Project

Alla Korostyshevsky, P.E., PMP

Project Engineer, Pipelines & SSO Reduction

Roxanne Lockhart

Contract Administrator – Contract Administration

Diana Woltersdorf

Manager – Contract Administration

Marisol V. Robles

SMWVB Program Manager



Non-Mandatory WebEx Pre-Bid Meeting

April 15, 2021

MAKING SAN ANTONIO
WATERFUL

